



Bins not being used 1



Bins not being used 2



Broken Fire / Smoke Detector



Broken light fitting 1



Broken light fitting 2



Broken light fitting 3 - insides broken



Broken light fitting 4 –Insides broken



Broken sensor



Broken light timer switch one of several



Broken window locks and frames



Condition of walls



Condition of windows 1



Condition of windows 2



Discarded Syringe





Damaged BT Box



Exposed live wires 1



Exposed live wires 2



Footprints on the walls !!!



Gap above Gate – regularly used for access by youths and tramps

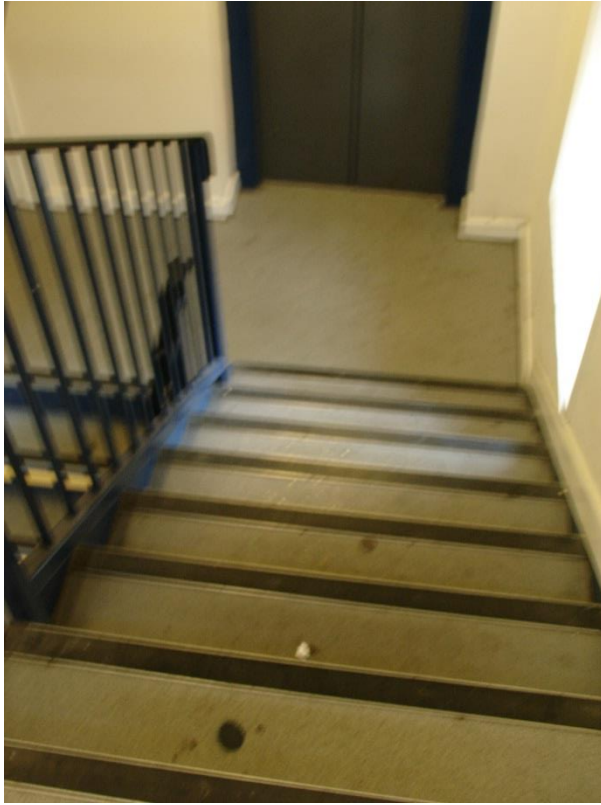


Gap above gate 2

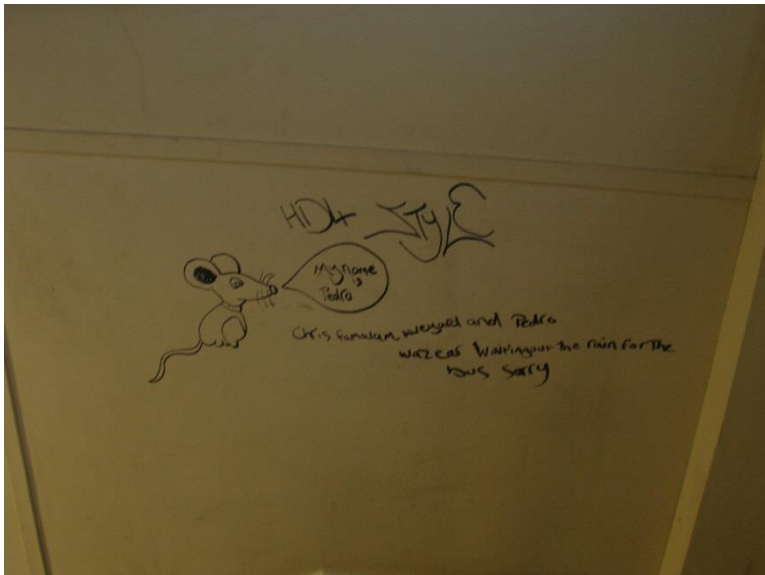


General cleanliness 1 and cupboard under stairs where tramps slept

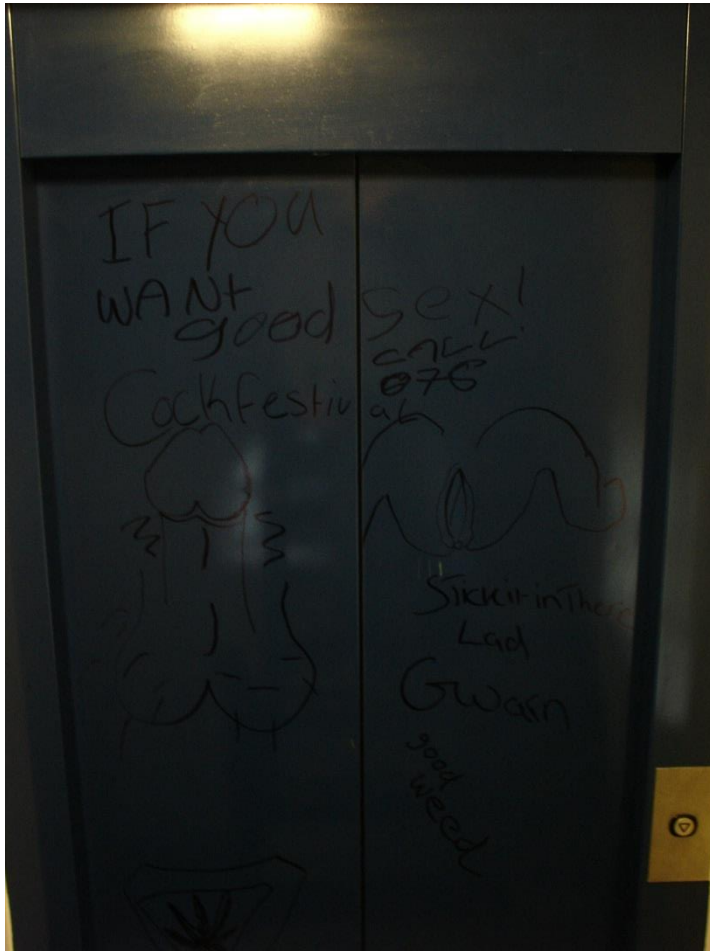




General cleanliness 2



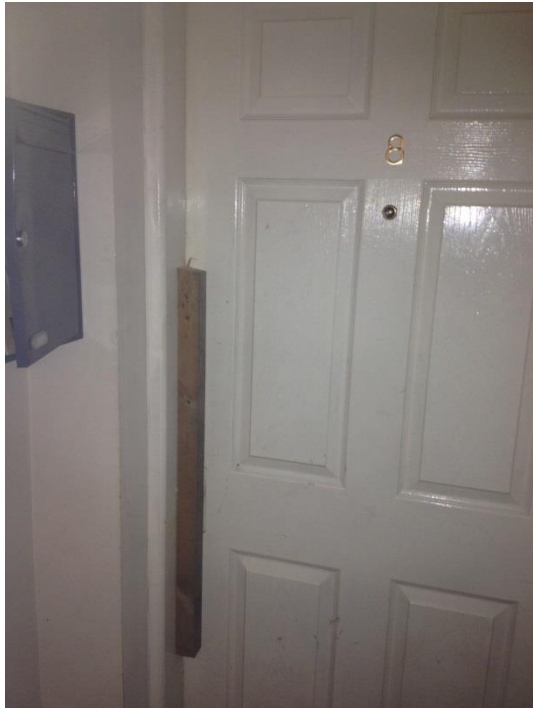
Graffiti on walls 1



Graffiti on lift doors – very offensive



Hole punched into wall



Internal Hallway 1



Internal Hallway 2



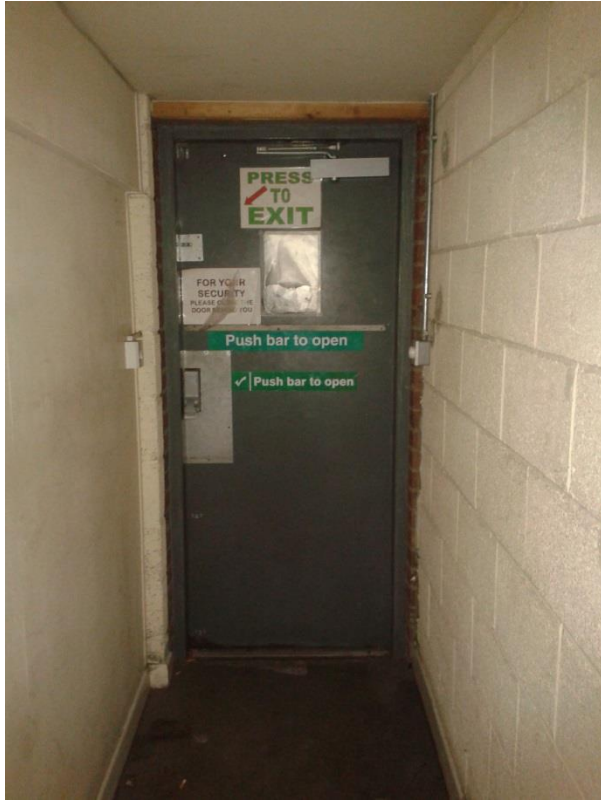
Internal hallway 3



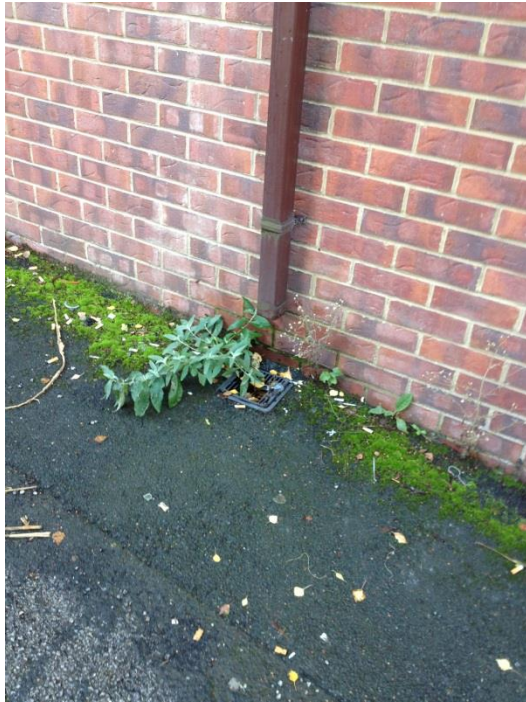
Internal hallway 4



Internal hallway 5



Main exit Door

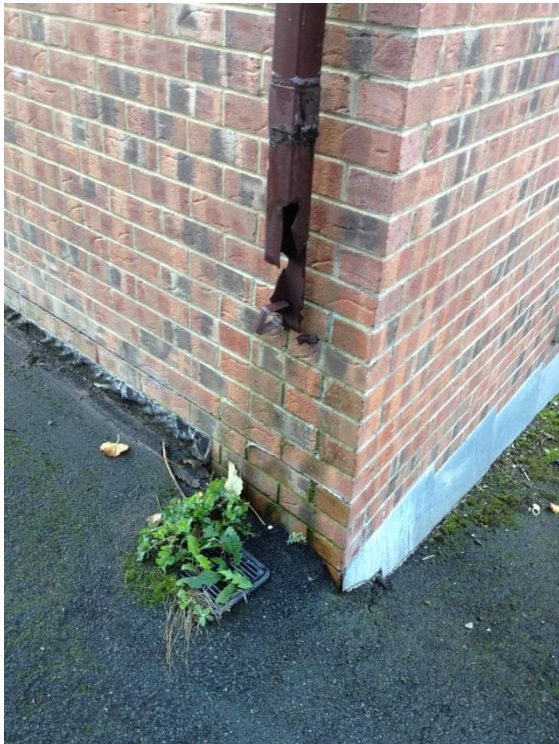


Broken Drain down pipe 1





Missing drain down pipe 2 - Algae on walls



Missing drain down pipe 3



Bracket for stolen extinguisher – repeated on many floors